



**John W. Blehm**  
President  
**Michael J. Muenks**  
Secretary/Treasurer  
**Jerry De Smidt**  
Director - North Central  
**Rob Sando**  
Director – Northeast  
**Paul Smith**  
Director – South Central  
**Barbara Campbell**  
Director – Southeast  
**Lisa Cree**  
Director – West  
**Don Cable**  
Honorary Vice President  
**Mike Gilbert**  
Honorary Vice President  
**Susie Winder**  
ABC Forum Administrator



#### Features this Issue:

Page 2 – Meet Reports  
Page 3 – District Reports  
Page 7 – Club Meets  
Page 8 – Blast from the Past

Ameraucana Breeders Club, 33878 Hwy 87, California, MO 65018-3911  
[www.ameraucana.org](http://www.ameraucana.org)

## President's Report, John Blehm

Spring is here in Mid-Michigan and everything looks beautiful. The apple trees are in full bloom, many of the farmers have the corn in and the lawn needs to be mowed.

By now most of us are either finished hatching or close to it. I was going to put my last hatch of the season in the incubators a few weeks ago, but have put in a few extra settings from special breeding projects. If I don't hatch them this year it will push back the projects another year. Many of us are already planning for next year's breeding projects and what we may do differently. I know there have been some years when projects seemed to not make any progress and sometimes go backwards. I continue to learn from experience.



I went for 20 some years only breeding Ameraucana chickens. I avoided the temptations of other breeds of chickens, poultry, pot-bellied pigs, alpacas and all the other animals that so many can't resist. We did have a couple horses and rabbits years ago for the kids and raised our own beef, but those weren't part of my hobby of breeding animals. Now I'm cheating a little on the side, by getting into some other breeds of chickens. Eventually I'll cut back on the number of Ameraucana varieties that I'll breed. Bantams are my favorites and I know I'll probably continue breeding them in buff, silver and lavender as long as I'm able.

I'm concentrating on improving some of the varieties and certain characteristics. The bantam lavenders are coming along well and I've mated a LF black cock over some bantam lavender pullets to create my F1 generation of LF lavenders. All of these chicks are black but should produce some lavender when mated together next year.



Wheaten Bantam Chick  
By John Blehm

I made some progress on improving the egg color of the LF blacks/blues. One blue hen is laying a beautiful LARGE blue egg. The drawback is not many of them are hatching.

The LF brown reds are hatching well and my top priorities are to select for proper size and egg color with them. By the time the hatching season started I only had a pair of bantam brown reds to breed from, so they are rare and need attention.

**Continued on page 2**

## President's Report, continued from page 1



Blue Wheaten Portrait

The bantam silvers are always a challenge. I had two breeding pens setup for them and don't know at this point if any progress was made this season. Getting them to breed true is a problem yet and they need improvements in pattern, color and type. We'll worry about shafting in the future. I do plan to improve their temperament, but that is a long term one. As a matter of fact it is the same special breeding plan I'm using with LF silvers. I'm crossing them with wheaten. I hatched the F2 generation of LF from this project and am encouraged by the looks of the chicks. In this LF project I'm breeding both ways...to improve silvers and also wheaten. The F2 chicks that are  $\frac{3}{4}$  wheaten and  $\frac{1}{4}$  silver, that I've kept, had wheaten down color/pattern and the other than striping in their hackles the pullets look very nice so far. I'm not recommending that others try this same cross. It produced many Easter Eggers along the way and that was expected. Before getting into a breeding project that involves crossing one variety with another I would suggest discussing it as a topic on the ABC Forum and get the input of many other breeders. I've made some crosses over the years that got me nowhere. They were disappointing and ended up a waste of time.

Kathy and I won't be able to attend the National meet this year, because I'm Show Superintendent of our local show club and will be busy preparing for our show which is the following weekend. The annual ABC National is the place to be, and I hope you can make it. Even if you don't plan to show...plan to go. Take a camera along and enjoy the fellowship of other ABC members.

---

### Abbreviation Guide for Meet Reports

**BB**=best of breed  
**RB**=reserve of breed  
**BV**=best of variety  
**RV**=reserve of variety  
**C**=cock  
**H**=Hen  
**K**=cockerel  
**P**=pullet  
**AOV**=Any Other Variety,  
**AOCCL**=All Other  
 Combs Clean Legged  
 Bantams  
**AOSB**=All Other  
 Standard Breeds (large  
 fowl)

## Mid Ohio Poultry & Bird Breeders, Eaton, OH, Meet Report

Special Meet, February 3-4, 2007, Reported by Terry Hofacker

No Ameraucana were shown due to inclement weather.

## Delmarva Poultry Fanciers, Harrington, DE, Meet Report

Delaware State Meet, March 31 – April 1, 2007, reported by Richard Barczewski

2 bantams shown by 1 exhibitor, judged by Matt Lhamon

BB wheaten P by Carolyn Blum – out of 2 shown by 1 exhibitor

RB wheaten K by Carolyn Blum

13 large fowl shown by 5 exhibitors, judged by Doug Cauthorne

BB, BV black C by Larry Clionsky – out of 11 shown by 5 exhibitors & **Champion Ameraucana**

RB, RV black C by Camille Lewandowski & **Reserve Champion Ameraucana**

BV silver H by Carolyn Blum – out of 2 shown by 1 exhibitor

RV silver C by Carolyn Blum

JR Show

BB black C by Camille Lewandowski – **Champion Ameraucana Over-All**

## Green River Poultry Club, Inc Spring Show, Brownsville, KY, Meet Report

Special Meet, April 21, 2007, reported by Randy Graham

No Ameraucana were shown.

## Rocky Mountain Poultry Association, Great Falls, MT, Meet Report

Montana State Meet, April 28-29, 2007, reported by Jamie Rensmon

18 bantams shown by 2 exhibitors, judged by Gary Overton

BB, BV buff K by Larry and Karolyn Kibbee – out of 2 shown by 1 exhibitor & **Champion**

### **Ameraucana**

RV buff P by Larry and Karolyn Kibbee

RB, BV blue wheaten P by Nadine Wisniewski – out of 9 shown by 2 exhibitors & **Reserve**

### **Champion Ameraucana**

RV blue wheaten K by Larry and Karolyn Kibbee

BV wheaten P by Larry and Karolyn Kibbee – out of 5 shown by 2 exhibitors

RV wheaten C by Nadine Wisniewski

BV white H by Larry and Karolyn Kibbee – out of 2 shown by 1 exhibitor

RV white H by Larry and Karolyn Kibbee

4 large fowl shown by 1 exhibitor, judged by Gary Overton

BV black H by Ramona Iwan – out of 1 shown by 1 exhibitor

BB, BV blue H by Ramona Iwan – out of 3 shown by 1 exhibitor

RB, RV blue P by Ramona Iwan

### JR Show

wheaten H by James Freeman – **Champion Ameraucana Over-All**

## Western District, Lisa Cree, Director

The **ABC National Meet** will be hosted by the Montana Poultry Fanciers Association and being held at the Montana State Fairgrounds in Great Falls MT. This is a double show. The ABC National has been placed in the first of the two shows. Judges are Paul Wieser and Brian Decker. An egg contest is also being planned and we're hoping Mike Gilbert will judge these.

I've been in touch with Karalyn Kibbee about this show. She has some terrific award ideas and is very excited about the show. Karalyn and I have discussed awards for a number of classes but what we can do will be based of course on the support we can get. The Montana Poultry Fanciers Association has generously donated \$300.00 towards awards for the ABC National. We've had a couple other pledges, but we really need your support! Please consider what you can do to help make this a terrific event.

You can contact me or Larry Kibbee, the MT Poultry Assoc. President, Larry Kibbee, [singletreebantam@wmconnect.com](mailto:singletreebantam@wmconnect.com) (406)284-6978 for more information.



One of Arne Schmidt's white large fowl . . .  
Look at that type!

Photo provide by Mike Gilbert.

Make plans now  
to attend the ABC  
National meet at  
the Big Sky  
Exposition, in  
Great Falls,  
Montana,  
October 6<sup>th</sup> & 7<sup>th</sup>,  
2007!



## North Central District Report, Jerry De Smidt, Director



Hello everyone, as I sit here writing this article our busy season in landscaping is upon us. The hatching is done as of the beginning of May and the hours at work are long. We hatched out about six hundred chicks this year, Ameraucanas in blue, black, buff, splash, white, blue wheaten, and wheaten. The older birds that were hatched in January are looking good and the youngest are too small to tell.

I have placed some meets, and if anyone would like to have a meet placed please contact me at [jwoodhaven@aol.com](mailto:jwoodhaven@aol.com) or call me at 920-833-9772.

- The Wisconsin International Poultry Club will host the state meet for Wisconsin. The show dates are Saturday, September 22 and Sunday, September 23, 2007.
- The Minnesota State Show will host the state meet for Minnesota. The show is held at the end of October. Check the club web site for contact information when it becomes available or contact me directly in July.
- The Eastern Iowa will host the District show for Ameraucanas the weekend of Thanksgiving. See the meet list for contact information.

I hope all is well with everyone and hope to see you at some poultry shows this year. Jake and I are planning on going to the ABC National and would like to see everyone there.

---

## Southeastern District, Barbara Campbell, Director



By the time you're reading this the spring show season will be wrapping up. Now is the time we need to be planning ahead for any fall shows that you may be interested in. There are quite a few nice shows coming up in the southeastern region, so keep an eye on the Poultry Press and get your requests to me before the August 15th newsletter deadline so I will have time to coordinate the meet. Remember that in accordance with the Explanation of ABC Meet Policy which can be found on page 21 of the 2005 Handbook "Meets will only be placed by a district director if a member in his or her district requests a meet for a specific show in time for the distribution of information via the ABC quarterly bulletin prior to the entry deadline for that show"

## Northeastern District, Rob Sando, Director

It has been a busy this spring. I have only made it to two shows and the Ameraucanas were great. There are still a few spring shows left in the district, so please support them. The fall shows will soon be fired up and our district meet will be in Lucasville, Ohio for their fall show. More details will follow. I have been busy getting chicks hatched and at this point I have 50 out plus some great chicks from Michael. As a reminder if you want a meet at your show I must have the request before the next newsletter (August 15, 2007) so I can get the meet placed and let Michael know when and where. Until next time . . .

---

**Do you have pictures of your birds you would like to share?**

**Send them to the club secretary either as electronic files or as regular photos!**

Summer Vacation



## South Central District Report, Paul Smith, Director

Greetings from the South-Central District!

It's hard to believe that it's almost time for hatching season to be complete. It has gone by so fast this year! We managed to attempt 5 hatches in incubators. The first and third ones were a disaster. Learn from my mistake, so you won't have to experience the same disappointing results. Two of the probe dial type thermometers were registering the required 99.5° F in the air circulated GQF incubator. One thermometer was several years old and the other one purchased last year. The chicks started hatching two days and a few hours too early. I knew from experience that if they hatch early the incubator is too warm and if they hatch late it's too cool, so we purchased two new digital thermometers. I was surprised to see that the correct temp was 101.8° F to 102° F. Ten hatched but only 7 survived from the 273 eggs. The fourth incubator had been running for one week when the third one hatched. The fourth incubator had been adjusted using the same two thermometers, so we set the fifth one, not knowing if the fourth one would also be a disaster, due to the overheated eggs. I was later told that the second week was the crucial time and that they would hatch due to getting the temp down to the correct level in time. The fourth incubator managed to produce 100 healthy perky chicks which are thriving and growing well. The fifth hatch which was constantly maintained at 99.5° managed to hatch 113 chicks. I'm sure glad that we didn't try to hatch chicks for orders this year, as it would have been a disaster with the two hatches that failed due to being set at the incorrect temps, the down time due to the unexpected heart surgery, and time spent building our new house.

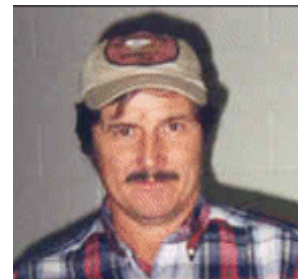
We sent many dozen hatching eggs all over the US. Most of the hatches that we heard from had a little over 50% hatch, which I feel is good for shipped eggs. The post office personnel have a way of decreasing the hatch rate by throwing the boxes into the cart it needs to be in to reach its required destination. I've learned if the box has been thrown hard enough to break an egg's shell the surviving eggs usually don't hatch very well due to being broken inside. I worked in the post office, part time 22 years ago so I saw what happens behind the scenes and appreciate my mail delivered everyday! I recently learned of a special service the post office offers called "special handling". This service costs an additional \$6.90 for packages less than 10 pounds and \$9.60 for over 10 pounds as of May 14. Parcels with the "special handling" are kept separate from the just "priority" and don't receive the rough, hurried treatment that the others get. I'm anxiously awaiting the results of the hatches from hatching eggs that we sent using the "special handling" service. This may be a service that everyone who ships or receives shipped eggs, wants to use and in due time will we know whether the service is worth the extra expense.

We managed to hatch 305 chicks, so there should be plenty to show this fall and keep our breeding lines going to produce chicks for 2008. A few lines are being eliminated, due to recessive traits that surfaced from intense line breeding. We are planning on offering day old chicks again in the 2008 hatching season.

Wes Wyche has helped the breed by hatching 375 chicks of seven varieties with 3 more weeks of hatches still to go. Wes has sent chicks into 5 states and hatching eggs into 7. A special thanks for helping supply real Ameraucanas to folks who don't want the hatchery mutts. Wes has been busy lately setting out a grape vineyard. Thanks Wes for all that you are doing to advance the Ameraucana breed. We will be looking forward to showing with you this fall.

Speaking of showing, I have finally decided to set our district meet at the Southern Missouri Poultry Club Show held in Sedalia, Missouri in mid-October. Shawnee, Oklahoma has had it the past three years. I'll set Shawnee as a state meet.

May the Lord bless each with joy and a great growing season.



### AMERAUCANA CHICKS

Bantams and large fowl  
in several varieties from  
**ChickHatchery.com**

Now accepting order  
for 2008 hatches in  
March and April.

Go to  
[www.ChickHatchery.com](http://www.ChickHatchery.com)  
for complete information  
and an Order Form or  
send a SASE to  
ChickHatchery.com,  
4599 Lange Rd., Birch  
Run, MI 48415, for an  
Order Form.



## Treasurer's Report

ABC Checking Account, Central Trust Bank, Jefferson City, MO	
<b>Opening Balance 3/1/07</b>	<b>\$ 1,549.86</b>
Income – Dues, Directories, Donations, etc	281.00
Income – Printer Rebate	100.00
Income – Office Depot Rewards Program	38.56
<b>Income Subtotal</b>	<b>\$ 419.56</b>
Expense - Postage	11.93
Expense – Office Supplies (envelopes)	28.81
<b>Expense Subtotal</b>	<b>\$ 40.74</b>
<b>Ending Balance as of 5/27/07</b>	<b>\$ 1,928.68</b>
Respectfully Submitted, Michael J. Muenks, Secretary/Treasurer	

### Club Merchandise

1982 Club Handbook - \$5  
 1998 Club Handbook - \$5  
 2005 Club Handbook - \$5  
 ABC 4" Patch (2) - \$5.50  
 Bulletins 1979-1984 - \$30  
 Bulletins 1985-1993 - \$35  
 Breeders Directory - \$2

Make Checks Payable to the Ameraucana Breeders Club and send to the club secretary.



### Ameraucana T-Shirts

Black – 12" ABC Logo  
 100% preshrunk Cotton  
 \$10 - M, L, XL  
 \$12 – XXL

Natural – 2 5/8" ABC Logo  
 50% cotton/50% polyester  
 \$10 - M, L, XL  
 \$12 – XXL

Shipping included in the price. Send payment to:

John W. Blehm  
 4599 Lange Rd.  
 Birch Run, MI 48415-8137

## National Meet Awards

### 2007 Ameraucana Breeders Club National Meet

Awards offered by: The Montana Poultry Fanciers Association and its members & the Ameraucana Breeders Club and its members.

Big Sky Exposition, Great Falls, MT - October 6<sup>th</sup> & 7<sup>th</sup>

Champion Ameraucana	Rosette or Plaque
Reserve Champion Ameraucana	Rosette or Plaque
Best Display, LF or Bantam	Rosette or Plaque
Reserve Display, LF or Bantam	Rosette or Plaque
Best Trio, LF or Bantam	Rosette or Plaque
Reserve Trio, LF or Bantam	Rosette or Plaque
Best of Breed Bantam	ABC Rosette & \$40
Reserve of Breed Bantam	ABC Rosette & \$20
Best of Breed Large Fowl	ABC Rosette & \$40
Reserve of Breed Large Fowl	ABC Rosette & \$20
Best Ameraucana - in Junior Show	ABC Rosette
Best of Variety Bantam	Hand Painted Plate
	<b>Black, Blue, Blue Wheaten, Brown Red, Buff, Silver, Wheaten &amp; White</b>
Reserve of Variety Bantam	Hand Painted Mug
	<b>Black, Blue, Blue Wheaten, Brown Red, Buff, Silver, Wheaten &amp; White</b>
Best of Variety Bantam AOV	\$10
Reserve of Variety Bantam AOV	\$5
Best of Variety Large Fowl	Hand Painted Plate
	<b>Black, Blue, Blue Wheaten, Brown Red, Buff, Silver, Wheaten &amp; White</b>
Reserve of Variety Large Fowl	Hand Painted Mug
	<b>Black, Blue, Blue Wheaten, Brown Red, Buff, Silver, Wheaten &amp; White</b>
Best of Variety Large Fowl AOV	\$10
Reserve of Variety Large Fowl AOV	\$5
Best LF buff	The Arne Schmidt Memorial Traveling Plaque
Best Bantam Hen Eggs	Rosette or Plaque
Best Bantam Pullet Eggs	Rosette or Plaque
Best Large Fowl Hen Eggs	Rosette or Plaque
Best Large Fowl Pullet Eggs	Rosette or Plaque

Only Ameraucana Breeders Club Members are eligible for awards from the ABC & its members.

## Upcoming Club Sanctioned Meets

June 2, 2007

Special Meet, requested by Mike Gilbert  
Badger Poultry Club, Inc., Richland Center, WI  
Sponsored by Badger Poultry Club  
Contact:  
Ruth Lefeber (608)725-2179

June 9, 2007

Special Meet, requested by Patty Pickard  
Buckeye Fancy Feather Club, Canfield, OH  
Contact:  
Rhonda Simmons, [rjos@comcast.net](mailto:rjos@comcast.net) (330)426-6870

August 18, 2007

Iowa State Meet, requested by Al Nichols  
Iowa State Fair, Des Moines, IA  
Contact:  
Al Nichols, [coyotecornerqh1@aol.com](mailto:coyotecornerqh1@aol.com)

September 22-23, 2007

Wisconsin State Meet, placed by Jerry De Smidt  
Wisconsin International Poultry Club Show, Portage, WI  
Contact:  
TBD

October 6-7, 2007

**ABC National Meet**, placed by the Board of Directors  
Montana Poultry Fanciers Association, Great Falls, MT  
Contact:  
Larry Kibbee, [singletreebantam@wmconnect.com](mailto:singletreebantam@wmconnect.com)  
(406)284-6978

October 6-7, 2007

**North East District Meet**, placed by Rob Sando  
Southern Ohio Poultry Association's Fall Show, Lucasville, OH  
Contact:  
(740)259-2852 (evenings)

October 13-14, 2007

Michigan State Meet, requested by John W. Blehm  
Michigan Poultry Fanciers – Frankenmuth Fowl Fest,  
Frankenmuth, MI  
Contact:  
John W. Blehm, [FowlFest.org](http://FowlFest.org) (989)777-1234

October 13, 2007

**South Central District Meet**, placed by Paul Smith  
Southern Missouri Poultry Club, Sedalia, MO  
Contact:  
TBD

October 20, 2007

Indiana State Meet, requested by Wayne Gritter  
Central Indiana Poultry Show, Lebanon, IN  
Contact:  
Doug Akers, [dakers@purdue.edu](mailto:dakers@purdue.edu) (765)482-7182  
Ton Patterson, [rpatter815@earthlink.net](mailto:rpatter815@earthlink.net) (765)676-6192

October 28, 2007

Minnesota State Meet, placed by Jerry De Smidt  
Minnesota State Show, MN  
Contact:  
TBD

November 24-25, 2007

**North Central District Meet**, placed by Jerry De Smidt  
Eastern Iowa Poultry Show, Iowa City, IA  
Contact:  
Phil Shank, [pbshank@netins.net](mailto:pbshank@netins.net) (319)646-2001



Look at the outstanding breast lacing on  
this blue large fowl and the very neat  
comb!

Picture provided by Mike Gilbert.



---

Take time and trouble to show your birds at their very best!



This bantam blue wheaten pullet has exceptional tail color!

Picture provided by Mike Gilbert

---

### *Bantam Hill*

Interested in Ameraucana?

Visit our website at [www.bantamhill.com](http://www.bantamhill.com) for more information or send a SASE to Bantam Hill, 33878 Hwy 87, California, MO 65018

We have currently booked all spring 2007 orders! Check our site in July 2007 for available started and breeder Ameraucana.

## **Blast from the Past: Details**

The following is an article written by Don Cable in 1995 and included in the 1998 club handbook:

The finishing touches on preparing a bird for exhibition can be very important, particularly in a large class of quality entries. Some exhibitors do this just prior to leaving for the show, while others do it just prior to cooping at the show. Each has its advantage, but the decision is yours.

You will need water and a mild soap, vegetable oil, toothpicks, cotton swabs, a sturdy nail clipper, and a couple of old wash cloths and/or a towel. Warm or tepid water would be best, but any clean water will do. A mild soap used for dishwashing works well, and if you have a small scrub brush in your show kit, so much the better.

In as much as beard and muffs cover the greater part of the face, they should be free from any dirt, feed or other substance that prevents their full expression. The small pea comb should be washed thoroughly, dried and painted with a small amount of vegetable oil to enhance color. Likewise, the beak, nostrils, and face about the eyes need a cleaning. Pay particular attention to the beak – if either mandible needs a trim, use your nail clipper, being careful to do a neat balanced job. A balanced, well trimmed beak can make a vast improvement in the appearance of the head and face.

Shanks, toes and feet need a thorough cleaning as well. After washing and drying these areas, go over them again making certain that stains and rough areas are eliminated. If toenails need a trim, use your clippers to bring them into balance. When satisfied that the shanks, toes and feet are in good shape, coat these areas with oil to bring out their neat, clean appearance. Place a clean numbered band on your bird and make certain the bird arrives at the show in a box with plenty of clean shavings and ample room to move without jamming and breaking a sickle or main tail feather. Take time and trouble to show your birds at their very best.

## **New Ameraucana Varieties, Black and Blue Gold**

Lyne Peterson of California provided the following excellent pictures of her black and blue gold bantams.



Notice in particular the strong lacing and shafting on the hens



## Random Thoughts and Recollections

By Don Cable

My compliments on the new, professionally designed and executed format for the Ameraucana Bulletin. It is a far cry from the poor product that I sent to a patient and forgiving membership in the many years gone by. The only question that I have is just who does John Blehm represent in the little photograph at the bottom of page one – Wyatt Earp, Zorro, or Tex Critter?

The upcoming ABC National Meet at the Big Sky Exposition in Great Falls, Montana in early October looks to be a great show. Western Montana is one of my favorite spots in the West, and I wish that I could be there to meet old friends, especially Mike Gilbert and Jeanette Frank. Other friends of long standing, John Blehm and Koralyne Kibbee, of Montana, whom I have never met personally, have been supportive during my years in the ABC as well as the SPPA, and it would be a great pleasure to meet with all these folks, share reminders, jokes from the past and exchange a number of whoppers. Poultry people are next to horse traders in this respect.

Not having been active in the ABC these past years presents a problem relating to what is going on at the ground level in terms of breeding, showing, and promoting Ameraucanas. However, I do appreciate receiving the Bulletin as a means of keeping abreast of major trends in the club and I will always keep a place in my heart (if not in my head) for my friends, often at great distance and Ameraucana bantams especially, which are my favorites of the breed.

It was my good fortune to have attended the big show in Indianapolis last November. I did miss seeing Mike Gilbert, as his illness kept him home, but did speak briefly with John Blehm, who, like everyone else that weekend, was kept on the run. I did catch a short visit to the bantam Ameraucana aisle as was greatly impressed with the tremendous strides in improvement that have taken place over the years. This may not be as obvious to those who have bred them over time as they see improvement slowly and incrementally, whereas seeing them only occasionally; the great improvements in type and color are genuinely startling and rewarding.

Just about the only Ameraucana folks that I see on a regular basis are the Cree's – both Lisa and Gary are excellent representatives for the ABC and the breed. They have brought their large Ameraucana down from Washington to the Pacific Poultry Breeders Winter show in Stockton, California the past couple of years and are a genuine pleasure to be acquainted with. Unfortunately, they seldom if ever have much in the way of competition or local support these days. It is not always an easy trip down through the mountains for them and I appreciate their efforts and pleasant personalities. The ABC can be proud of them.

As for me, I keep busy and generally out of trouble. I serve on the Board of Directors of the Pacific Poultry Breeders, the SPPA and write a small column for their Bulletin, and write and edit the Nankin Quarterly for the Nankin Bantam Club of America. My best wishes to my friends as well as the not-so-friendlies and a successful hatch and safe trip to Great Falls in October.

## Bulletin Format and Postage

Due to the change in postage calculations it was more economical to fold the bulletins for mailing. Over the summer months I will be exploring possible bulletin formats. If you have suggestions or comments please send them to me. In this bulletin I have tried a single column of text for the articles. Please provide feedback regarding if this style is easier to read.

---

### For Sale

Started Ameraucana bantams in white, blue, splash, and black gold. Four to eight weeks old,

\$5.00 each plus box & shipping.

Mike Gilbert  
(608)857-3386

or e-mail:

[ameraucana@redstagacres.com](mailto:ameraucana@redstagacres.com)

---

### Club Notes

The deadline to submit articles, ads, reports, etc. for the next bulletin is August 15, 2007 and need to be sent to the club secretary.



Bulletin advertisements are free to all members!



Check out the ABC Forum, [www.ameraucana.org/abcforum](http://www.ameraucana.org/abcforum), to keep up with current topics in the Ameraucana world.

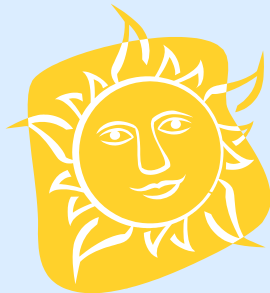


Membership renewals may be sent to the club secretary for 2008 at any time.

---

**Welcome to our  
New Members**

- Elizabeth Adams & Family, NC
- Kevin Bell, NC
- Carolyn Blum, PA
- Mary Bud & Family, OH
- Mark and Deanna Jones & Family, MI
- John Minnick, PA
- Mark and Rebecca Moses & Family, OK
- Elizabeth Olson, WI
- Katelyn Riley, CA
- McKenzie Robey, VA
- Richard Wigfield, PA



**Features in the October Issue:**

- Blast from the Past
- Last Minute ABC National Notes
- NAIS Update

**BIG SKY POULTRY EXPOSITION  
6TH ANNUAL FALL DOUBLE SHOW  
OCTOBER 6, 2007**



Hosted by  
*Montana Poultry  
Fancier's Association*

Judges:  
Paul Wieser &  
Brian Decker

Contact:  
President- Larry Kibbee 406-284-6978  
Show Secretary- Sharon Eliasson  
eliasson@midrivers.com 406-323-1655

**MONTANA STATE FAIRGROUNDS  
GREAT FALLS MONTANA**

*Ameraucana Breeders Club  
National Meet*

Western Director, Lisa Cree  
360-830-2732



## Ameraucana Breeders Club Board of Directors

- President, John Blehm**  
4599 Lange Road, Birch Run, MI 48415 [john@ameraucana.org](mailto:john@ameraucana.org) (989)777-1234
- Secretary/Treasurer, Michael Muenks**  
33878 Hwy 87, California, MO 65018-3911 [michael@bantamhill.com](mailto:michael@bantamhill.com) (573)796-3999
- Director-North Central, Jerry De Smidt**  
N912 Hill Road, Pulaski, WI 54162 [jwoodhaven@aol.com](mailto:jwoodhaven@aol.com) (920)833-9772
- Director-Northeast, Rob Sando**  
2116 Street 121 W, New Madison, OH 45346 [rsando\\_shrop@hotmail.com](mailto:rsando_shrop@hotmail.com) (937)996-0117
- Director-South Central, Paul Smith**  
2257 CR 224, Gainesville, TX 76240 [sw\\_psmith@swmail.com](mailto:sw_psmith@swmail.com) (940)668-0719
- Director-Southeast, Barbara Campbell**  
392 Whitaker Hollow Road, Lake City, TN 37769 [BlueEggAcres@comcast.net](mailto:BlueEggAcres@comcast.net) (865)494-0876
- Director-West, Lisa Cree**  
Seabeck, WA [creefarm@peoplepc.com](mailto:creefarm@peoplepc.com)