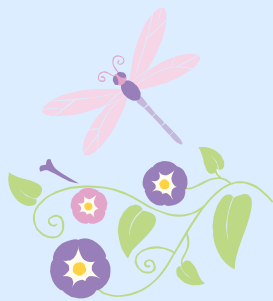




Ameraucana Breeders Club, 33878 Hwy 87, California, MO 65018-3911
www.ameraucana.org

John W. Blehm
President
Michael J. Muenks
Secretary/Treasurer
Jerry DeSmidt
Director - North Central
Rob Sando
Director – Northeast
Paul Smith
Director – South Central
Barbara Campbell
Director – Southeast
Lisa Cree
Director – West
Don Cable
Honorary Vice President
Mike Gilbert
Honorary Vice President
Susie Winder
ABC Forum Administrator



Features this Issue:

Page 2 – Meet Reports
Page 4 – District Reports
Page 8 – Black Gold
Page 10 – Blast from the Past
Page 11 – Upcoming ABC Meets

President's Report, John Blehm

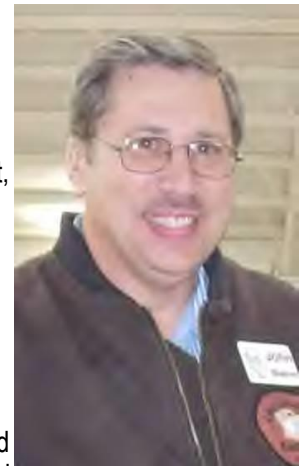
This is an election year for all elected offices in our club according to the Constitution and Bylaws. This is the official call for nominations and they will be accepted through August 20th. A ballot will be in the next Bulletin and the results posted in the last Bulletin of the year. Elected officers will assume office on January 1st. Please email or send your nominations to Michael, our secretary, and don't be shy about nominating yourself. Others may not know you are willing to serve and we need people like you to help lead this organization.

Also note that according to Article X this is the year you may propose amendments to the Constitution and/or Bylaws. If you have any in mind please email or send them to me, the President, by August 10th. I will submit the proposals to the Board or Directors who will decide, by August 20th, which ones should be on the ballot to be voted on by the membership.

The chicks are hatched and growing. As they mature I'll keep sorting through them, keeping the best and selling the rest. Most that don't make the first cut at hatch time are true culls, but many that get rejected in spring, summer and fall may be very good and end I can only winter so many birds and only need so many breeders for the next breeding season. I've hatched over 2,000 Ameraucana chicks this year besides a few Lakenvelder, Vorwerk, Hamburg and Chantecler. Many of the chicks were sent out around the country to fill orders. Many of the culls were sold to locals and at area swap meets as "backyard" chickens and a few hundred "keepers" are still in the brooders. Some culls (or "rejects" as I call them) are from experimental mating or breeding projects like developing the large fowl lavender variety.

By selling as many as possible as young as possible I can save on feed and I'm sure you know what has happened to the price of feed and almost everything else. Until the birds pay for themselves I'll have to consider them a hobby. After 3 years and 3 months of retirement, I've gone back to work as a Patternmaker to help bring in some \$. If I had known a couple months earlier that I was going to return to work, when I did, I wouldn't have planned on hatching all that I did. The good news is I'm cutting back to 32 hours per week, at work, to allow for more time at home to help with my wife's advertising business and whatever. By the way I don't plan to accept a nomination for President for the next two year term.

I'll post "for sale ads" on the ABC Forum if and when I have extras to offer and invite all members to do the same. When I get inquiries for birds I direct folks to the Breeders Directory and the forum and let them know they can place a "want ad" there.



President's Report, continued

Please make plans to exhibit at our annual national meet in Minnesota, on October 25th & 26th. Our ABC national is the really big event for our club each year and many of us will be there and hope you will too. The other show that I will attend is our NC District meet (just 8 miles from home) here in mid Michigan. It is Grandpa Tiny's Frankenmuth Fowl Fest on October 11th & 12th. Check it out at FowlFest.org and I hope to see you this fall.

Abbreviation Guide for Meet Reports

BB=best of breed
RB=reserve of breed
BV=best of variety
RV=reserve of variety
C=cock
H=Hen
K=cockerel
P=pullet
AOV=Any Other Variety,
AOCCL=All Other
 Combs Clean Legged
 (bantam)
AOSB=All Other
 Standard Breeds (large
 fowl)

Southeast Ohio Poultry Breeders Association Show Marietta, OH Meet Report

Special Meet, March 29, reported by Wyatt Adelsperger

2 bantams shown by 2 exhibitors, Judged by Rick Hare

RB, BV wheaten H by Caleb Pickard – out of 2 shown by 1 exhibitor, **Reserve Champion Ameraucana (Junior Show)**

RV wheaten C by Caleb Pickard

BB, BV white by P Jennifer Kelly – out of 2 shown by 1 exhibitor, **Champion AOCCL (Junior Show), Champion Ameraucana (Junior Show)**

RV white by C Jennifer Kelly

3 large fowl shown by 3 exhibitors, Judged by Gary Overton

BB, BV black H by Nicole Pickard – out of 2 shown by 2 exhibitors, **Champion Ameraucana Over-All (Junior Show), Champion AOSB (Junior Show)**

RV black P by Brandi Powell

RB, BV white K by Jennifer Kelly – out of 1 shown by 1 exhibitor, **Reserve Champion AOSB (Junior Show)**

Corn Husker Poultry Club Avoca, IA Meet Report

Special Meet, May 10-11, 2008, reported by Diana Dahir

14 bantams shown by 4 exhibitors, Judged by Bart Pals

BV black K by Al Nichols – out of 1 shown by 1 exhibitor

BB, BV blue K by Nancy Dean – out of 5 shown by 4 exhibitors

RB, RV blue H by Al Nichols

BV blue wheaten by Al Nichols – out of 1 shown by 1 exhibitor

BV white H by Al Nichols – out of 5 shown by 4 exhibitors

RV white P by Al Nichols

BV splash P by Al Nichols – out of 1 shown by 1 exhibitor

BV black gold C by Al Nichols – out of 1 shown by 1 exhibitor

Junior Show

BB, BV blue bantam K by Nate Downey, **Champion Ameraucana Over-All (Junior Show)**



Blue Wheaten Portrait

Rocky Mountain Poultry Association Show #1 Hamilton, MT Meet Report

Special Meet, May 2-4, 2008, reported by Jamie Rensmon

7 bantams were shown by 3 exhibitors, judged by Paul Weiser

BV blue wheaten C by Nadine Wisniewski – out of 4 shown by 2 exhibitors
RV blue wheaten P by Nadine Wisniewski
BB, BV buff C by Larry and Koralyn Kibbee – out of 1 shown by 1 exhibitor
RB, BV wheaten H by Nadine Wisniewski – out of 2 shown by 2 exhibitors
RV wheaten P by Leia Chapman

9 large fowl were shown by 4 exhibitors, judged by Brian Decker

BV black H by Connie “Jean” Ribbeck – out of 4 shown by 2 exhibitors
RV black by Leia Chapman
BV blue P by Connie “Jean” Ribbeck – out of 1 shown by 1 exhibitor
BB, BV buff H by Connie “Jean” Ribbeck – out of 4 shown by 2 exhibitors, **Champion Ameraucana Over-All, Reserve Champion AOSB**
RV buff P by Larry and Koralyn Kibbee
RB, BV wheaten H by Connie “Jean” Ribbeck – out of 1 shown by 1 exhibitor, **Reserve Champion Ameraucana Over-All**
BV white C by Connie “Jean” Ribbeck – out of 1 shown by 1 exhibitor

Junior Show

BB, BV wheaten bantam P by Leia Chapman, **Champion Ameraucana Over-All (Junior Show)**

Rocky Mountain Poultry Association Show #2 Hamilton, MT Meet Report

Special Meet, May 2-4, 2008, reported by Jamie Rensmon

7 bantams were shown by 3 exhibitors, judged by Brian Decker

BB, BV blue wheaten C by Nadine Wisniewski – out of 4 shown by 2 exhibitors, **Champion Ameraucana Over-All, Reserve Champion AOCCL**
RB, RV blue wheaten P by Nadine Wisniewski
BV buff C by Larry and Koralyn Kibbee – out of 1 shown by 1 exhibitor
BV wheaten H by Nadine Wisniewski – out of 2 shown by 2 exhibitors
RV wheaten P by Leia Chapman

9 large fowl were shown by 4 exhibitors, judged by Paul Weiser

BV black H by Connie “Jean” Ribbeck – out of 4 shown by 2 exhibitors
RV black by Leia Chapman
BV blue P by Connie “Jean” Ribbeck – out of 1 shown by 1 exhibitor
BB, BV buff C by Connie “Jean” Ribbeck – out of 4 shown by 2 exhibitors
RV buff H by Connie “Jean” Ribbeck
BV wheaten H by Connie “Jean” Ribbeck – out of 1 shown by 1 exhibitor
RB, BV white C by Connie “Jean” Ribbeck – out of 1 shown by 1 exhibitor

Club Notes

The deadline to submit pictures, articles, ads, reports, etc. for the next bulletin is August 15, 2008 and need to be sent to the club secretary.



Bulletin advertisements are free to all members!



Check out the ABC Forum, www.ameraucana.org/abcforum, to keep up with current topics in the Ameraucana world.



New meet requests are due by August 15, 2008! To request a meet send the information to your district director and copy the club secretary.



Missouri State Poultry Association Show #1 Sedalia, MO Meet Report

State Meet, April 19, 2008, reported by Bernita Miller

2 bantams were shown by 1 exhibitor, judged by Andy Barnes

BB, BV wheaten H by Chris and Pam Link – out of 2 shown by 1 exhibitor, **Champion Ameraucana Over-All**

RB, RV wheaten H by Chris and Pam Link

4 large fowl were shown by 2 exhibitors, judged by Jamie Matts

BB, BV black H by Pam Hamilton - out of 1 shown by 1 exhibitor, **Reserve Champion Ameraucana Over-All, Champion AOSB**

RB, BV blue C by Ken Olsen – out of 1 shown by 1 exhibitor

BV splash C by Ken Olsen – out of 2 shown by 1 exhibitor

RV splash C by Ken Olsen

Missouri State Poultry Association Show #2 Sedalia, MO Meet Report

Special Meet, April 19, 2008, reported by Bernita Miller

2 bantams were shown by 1 exhibitor, judged by Dwayne Ballard

BB, BV wheaten H by Chris and Pam Link – out of 2 shown by 1 exhibitor, **Reserve Champion Ameraucana Over-All**

RB, RV wheaten H by Chris and Pam Link

4 large fowl were shown by 2 exhibitors, judged by Larry Denny

BB, BV black H by Pam Hamilton - out of 1 shown by 1 exhibitor, **Champion Ameraucana Over-All, Champion AOSB**

BV blue C by Ken Olsen – out of 1 shown by 1 exhibitor

RB, BV splash C by Ken Olsen – out of 2 shown by 1 exhibitor

RV splash C by Ken Olsen

Dayton Fancy Feather Show Greenville, OH Meet Report

Northeast District Meet, April 26-27, 2008, reported by Rob Sando

9 bantams were shown by 3 exhibitors, judged by Rick Porr

BB, BV wheaten H by Kathy Gratch – out of 7 shown by 3 exhibitors

RV wheaten C by Patty Pickard

RB, BV white H by Kathy Gratch – out of w shown by 1 exhibitor

RV white K by Kathy Gratch



WANTED!

2 to 6
Buff Ameraucana
bantam
pullets or hens

Mary Jo Keith
Crossville, TN
(931) 277-5553

For Sale

**Ameraucana Blue,
Black and Splash
Large Fowl**

We have a brochure
available upon request for
information regarding
chicks and breeding
stock.

We can ship or deliver to
shows we attend. NPIP
Certified

Lisa and Gary Cree,
Seabeck Washington

creefarm@peoplepc.com
creefarm.fateback.com

18 large fowl were shown by 4 exhibitors, judged by Lewis Cunningham

BB, BV black C by Kathy Gratch – out of 8 shown by 3 exhibitors

RV black H by Kathy Gratch

BV blue H by Bruce Glaze – out of 3 shown by 3 exhibitors

RV blue H by Rob Sando

BV wheaten H by Bruce Glaze – out of 1 shown by 1 exhibitor

RB, BV white H by Kathy Gratch – out of 5 shown by 3 exhibitors

RV white K by Kathy Gratch

Junior Show

BB, BV white large fowl K by Jennifer Kelly, **Champion Ameraucana Over-All (Junior Show)**

Muskingum Valley Poultry Show Zanesville, OH Meet Report

Special Meet, March 1, 2008, reported by Patty Pickard

1 bantam shown by 1 exhibitor

BB, BV wheaten C by Kim Munden – out of 1 shown by 1 exhibitor

1 large fowl shown by 1 exhibitor

BB, BV blue P by Janis Orndorf – out of one shown by 1 exhibitor

2 Junior bantams shown by 1 exhibitor

BB, BV wheaten C by Caleb Pickard – out of 2 shown by 1 exhibitor, **Champion Ameraucana Over-All (Junior Show)**

RB, RV wheaten H by Caleb Pickard

6 Junior large fowl shown by 2 exhibitors

BB, BV black C by Anthony Heitger – out of 4 shown by 2 exhibitors, **Champion AOSB**

RB, RV black H by Nicole Pickard, **Reserve Champion AOSB**

BV blue H by Anthony Heitger – out of 1 shown by 1 exhibitor

BV silver H by Anthony Heitger – out of 1 shown by 1 exhibitor

Northeast District, Rob Sando, Director

Hello from Ohio!

This has been a very unusual spring here. The cold and wet makes it hard to get all the field work done! Most of my hatching is done, but I am still setting a few lots of promise in some of the early hatches!

The district meet was at the Dayton show in Greenville, Ohio. We had several great birds there! I have included some pictures of the winners! The Ameraucana class at the shows around here just keeps getting better. Let's hope that continues!

I hope all have a good summer and good luck at the fairs this summer. The fall shows are just around the corner! Until next time . . . Rob



Kathy Gratch's bantam wheaten at the Northeast District Meet.



Kathy Gratch's bantam White at the Northeast District Meet.



Kathy Gratch's large fowl black at the Northeast District Meet.



Jennifer Kelly's white large fowl at the Northeast District Meet.





Southeast District, Barbara Campbell, Director

The Bluegrass Poultry Association did such a fine job of hosting our SE District meet last year that I'm placing our District meet with them again this year. It will be on Saturday, October 25th and I believe it will be held at a new facility near Lexington, KY. All the details will be in the fall issue of the newsletter. Hope to see some of you there!

Western District, Lisa Cree, Director

Greetings from Western Washington!

I've had the pleasure to be in contact with a few new breeders in the Pacific NW who are very excited about the breed and joining the club.

Here on our farm the incubators have been busy. We continue to work on improved egg color while maintaining the type and quality of the birds. Every year we have a few crosses were especially excited about. There seems to be such a variation of pattern in Splash birds. We've been especially taken with some of the birds with increased pattern and are working to reproduce that, and increase the evenness of the pattern.

I'm in the process of placing a State Meet (Washington State) at the Spokane County Interstate fair September 10-12-08. The judges are Ken Cook and James Adkins.

Exhibitors guide, open and youth:

spokanecounty.org/Fair/SIF/Competitions/Animal_Exhibits.aspx

Open Superintendent: Cathy Armstrong, carmstrong_2001@yahoo.com

Show B info: Tony Albriton 509-465-9405

Spokane County Fair and Expo Center

404 N. Havana St Ste 1 • Spokane Valley, WA 99202-4663. Phone: (509)477-1766

The 2009 District Meet has been placed at the Pacific Poultry Breeders Association Winter Show in Stockton CA, January 24th and 25th, 2009. Show Co-Superintendents are: Lowell Sherman, 5615 Memory Way, Fair Oaks, CA 95628-2936, (916) 967-1539, skuter2@earthlink.net and Jim Sallee, PO BOX 697, Pine Grove, CA 95665, (209) 296-8084, jsallee@volcano.net. The how secretary is Teresia Renwick, 1333 Quarter horse Dr, Grass Valley, CA 95949. (530) 268-2488, renwickranch@sbbmail.com

Show judges are: Steve Jones, Jerry Yeaw, Bill Patterson, Paul Kroll, Danny Pagent, and Terry Britt. Terry, Paul and Bill will do a showmanship class each.

Hope everyone has a terrific spring and summer.

Warmest regards,

Lisa Cree

Just a note:

The 2009 ABA Semi Annual will be held at the Pacific Northwest Poultry Association Spring Show in Stevenson Washington.



Pips & Peeps

Large Fowl

Amaucanas

Black, Blue, Blue

Wheaten, Buff,

Silver,

Wheaten & White



Jean Ribbeck

PO Box 461

Newman Lake,

WA 99025

509-226-3833

ribbeck@sprynet.com

home.sprynet.com/~rribbeck/

North Central District, Jerry DeSmidt, Director

Greeting from the Midwest! Hatching is coming to a fast close for us as we have only one batch of duck eggs hatching as I am writing this article. Our first couple of hatches were great and then we started having problems with the incubator and we do not have that many chicks hatched. We did not hatch any bantam chicks this year for there was no fertility and when we stopped setting the production picked up. The older birds that were hatched in January are looking good and the youngest are to small to tell.

I would like to hear back form all members as to what kind of awards to have for the National show that will be held in Hutchinson, MN this year the end of October. Please contact me on any donations or awards that you would like for the show my email and phone are: jwoodhaven@aol.com or call me at 920-833-9772.

- The Wisconsin International Poultry Club will host the state meet for WI show dates are Sat Sept 27 and Sun Sept 28 2008
- The Frankenmuth, MI show will be hosting the Midwest District show October 11-12, 2008
- The Minnesota State Show will host the National meet for MN show held the show is held the 25 & 26 of Oct, 2008
- The Eastern Iowa will host the State show for the Ameraucana the weekend of Thanksgiving.

I hope all is well with everyone and hope to see you at some Poultry shows this year. Jake and I are planning on going to the ABC nationals and would like to see everyone there. Send suggestions to jwoodhaven@aol.com and you can mail donations to:

Jerry DeSmidt
N912 Hill Road
Pulaski, WI 54162

South Central District, Paul Smith, Director

Greetings from the South Central District! It's hard to believe that it's time for hatching season here in the south to end. It sure goes by fast! It's amazing how fast time goes when you are having fun!

We cut back to eight hatches, instead of ten like we did in the past. Starting a month later, saved a lot on the electric bill-not having to heat the chicks as long.

Even though it's been fourteen years of running incubators, it's a new experience each year. Last year we almost ruined our first three by overheating them. This year our first two were almost ruined by under heating. I've learned that good thermometers go bad by giving the wrong temperature!

I was beginning to wonder if we were going to be able to keep any chicks for us to show. The first four hatches we only managed to keep 37 head as all the others were sent abroad. The last four hatches filled us to capacity on babies, even though many were shipped out. We hatched 840 this season, and have 270 here.



Ameraucana T-Shirts

Black – 12" ABC Logo
100% preshrunk Cotton
\$10 - M, L, XL

Natural – 2 5/8" ABC Logo
50% cotton/50% polyester
\$10 - L
\$12 – XXL

Shipping is included in the price of the shirts.

Send payment to:

John W. Blehm
4599 Lange Rd.
Birch Run, MI 48415-8137





Now comes the fun of feeding them and watching them develop into future show champions (at least some of them-hopefully!). We hope to go to Hutchinson, Minnesota to the national meet this fall. Hutchinson was our first national meet to show, and won with a black pullet and black trio. We've been to the national meet every year since and hope things work out this time, so we can go. My father has become very ill with a heart attack and stroke, and our fourth grandchild is due the week-end of the national meet, so we may have to miss this year.

Enjoy your birds! May God Bless each with a great growing season and some good Ameraucanas to show this fall.

Black Gold Ameraucana Proposed Variety Standard, spring 2001

Lyne Peterson of California provided the following excellent pictures of her black and blue gold bantams.

A few weeks ago on the Ameraucana Forum, Mike Gilbert asked if anyone had the original plumaged description for black gold. I replied that I knew I had it some where . . . I just needed to find it. After searching through my old bulletins, I found it in the very first bulletin I received – spring 2001. The original proposed name for the variety was golden quail, but there was so much confusion that the name was changed to black gold at the 2004 National Meet in Portage, WI, although if memory serves the following description has not.

Color of Male



Black Gold Pair

COMB, FACE, AND EARLOBES: Red
HEAD: Golden bay
BEARD & MUFFS: Light golden brown tinged with grey
NECK: Hackle – Golden bay, slight black striping permitted in lower hackle
 Front of Neck – Golden orange
BACK: Golden bay, each feather penciled with a single broad band of black
SADDLE: Brilliant black, each feather laced with golden orange and with straw colored shafting
TAIL: Main Tail – black with straw colored shafting
 Sickles, Lesser Sickles and Coverts – brilliant black with light orange shafting and thinly laced with light orange
WINGS: Bows – Deep orange bay
 Coverts – Orange bay
 Primaries – Dull black, leading edge light gold coarsely stippled with black, straw colored shafting
 Secondaries – Black, lower edge orange-gold stippled with black, producing a wing bay of orange gold heavily stippled with black
BREAST: Upper breast – same as front of neck
 Lower breast and Upper Thighs – Orange gold, each feather having a broad single penciling of black
BODY, STERN, and FLUFF: Dull black irregularly barred with light golden orange
LOWER THIGHS: Same as body and stern
UNDERCOLOR: Slate



Blue Gold Hen and
Black Gold Cock

Color of Female

COMB AND FACE: Red
EARLOBES: Very pale, conforming to color of skin
HEAD: Light golden bay

BEARD & MUFFS: Light golden brown tinged with grey
 NECK: Hackle – Light golden bay, striping in lower hackle permitted
 Front of Neck and Upper Breast – Golden orange
 BACK AND CUSHION: Black, finely laced and shafted with bright golden straw
 TAIL: Main Tail – Black, finely laced and shafted with bright golden straw
 Coverts – Same as main tail
 WINGS: Shoulders, Fronts, Bows, and Coverts – Dull black, finely laced and shafted with bright golden straw
 Primaries – Dull black, leading edge light bordered with golden straw
 Secondaries – Black, shafted with golden straw, leading edge stippled with golden straw
 LOWER BREAST: Dull black, each feather shafted and penciled with golden straw
 BODY: Black, finely laced and shafted with golden straw
 STERN: Dull black
 LOWER THIGHS: Same as lower breast
 UNDERCOLOR: Slate

Defects

Failure of single broad penciling on lower breast and back of males. Excessive black on upper breast of males and females. Excessive black striping in hackles of either sex.

The 2005 ABC Handbook has an article on breeding black gold Ameraucana by Mike Gilbert.

Teresa A. Brittnacher, Former North Central District Director

Teresa A. Brittnacher, 58, Greenleaf, passed away Monday, June 2, 2008 at a local hospital. She was born October 7, 1949 in De Pere, WI, daughter to Robert and Doris (Debusch) Smits. She graduated from De Pere High School in 1967, and married Kenneth Brittnacher, February 11, 1969 in De Pere. Teresa drove school bus for the Wrightstown School District for over 19 years. Teresa enjoyed being involved with Greenleaf 4-H, De Pere Historical Society, and was also a county fair poultry judge and enjoyed showing her bantam chickens around the country. She also liked spinning and weaving.

Survivors include her husband, Kenneth; four children: Shelly Brittnacher, Becky (John) Webster, Matthew Brittnacher, and Jason Brittnacher; six grandchildren: Brittney, John Jr., Ashley, Alex, Hannah, and Marixsa; her mother, Doris Smits; brother and sisters: John (Sandy Daanen) Smits, Robert (Joann) Smits, Mary (Dennis) Wicker, Ellen (Robert) Coenen, and Michael Smits; sister-in-law, Tracy Smits; numerous nieces, nephews, the Brittnacher family, and friends.

Teresa was preceded in death by her father and one brother, Jim.

Family and friends may call Friday, June 6, 2008 from 1:00 p.m. to 8:00 p.m. at DeWane-Cotter Funeral Home, 711 Main St., Wrightstown, where there will be a Prayer Service conducted by Deacon Ken Kabat at 8:00 p.m. Online condolences may be expressed at www.cotterfuneralhome.com.

The family extends a warm thank you to all the family and friends who've shown love and support



Teresa Brittnacher
Former North Central
District Director
1949-2008



[Ameraucana bantams
in wheaten, blue-
wheaten, blue, black,
and brown-red.
Possibly a few in black
gold and/or large fowl
brown-red.](#)

I will deliver to the ABC
Meets at Richland Center,
WI, in June; Portage, WI, in
September, and the ABC
National in Minnesota this
October.

[Order early to ensure
availability.](#)

[Contact Mike Gilbert
at \(608\)857-3386 or
e-mail
Ameraucana@redstag
acres.com](#)



Very blue large fowl
hatching eggs in
any variety.

Dianne Diehl
Currie, NC
(910)283-4604

Blast from the Past: Egg Color and Breed Development, Mike Gilbert, January 2001

Continuing with the theme of the "Blast from the Past" from the last bulletin I selected some words of wisdom from the spring 2001 bulletin to share.

Early in the development of the Ameraucana breed standard, certain old-timers such as the late Frank Gary (who was then chairman of the American Bantam Association standards committee), graciously passed on a few "pearls of wisdom" with regard to breed characteristics. One such bit of advice was to have the standard allow for at least some white in the earlobes. At the time mixed ear lobe color seemed a sure sign of impurity, and since we were desirous of escaping the mongrel designation then prevalent for "Araucana," the idea was respectfully dismissed. As the adage goes, "Fools rush in . . ."

Close to a quarter-century later we have a greater appreciation for Mr. Gary's words, even though we are still not in complete agreement with them. Why? It now seems clear that Mr. Gary, having bred color egg large "Araucana" during the 1930's and 1940's could foresee potential problems in maintaining excellent blue eggshell color if brown-egg chickens were crossed in to develop recognized plumage patterns. Because brown egg chickens mostly have red earlobes, they were primarily used in forming the breed, and are still used in isolated cases today. The result has been to develop several lines of beautifully colored Ameraucanas that lay green eggs. While not suggesting anyone abandon a strain of birds because of egg color, we do need to move towards the improvement of egg color over time. Blue is correct, green is not.

The reader needs to understand that the genetics for blue shells are inherited independently from the genetics for brown eggs; they are not mutually exclusive. When brown pigment mixes with blue, the result is green. When a bird inherits both blue and brown eggshell genetics, it lays green eggs. The specific shade of green will vary depending upon the relative strength of the two sets of genes and other modifying factors.

White eggshells, on the other hand, result from genetics that prevent brown pigment from developing in and on the eggshell. White is essentially a non-color, hence a chicken with genetics for white and blue shells will lay blue eggs. This is proper for the Ameraucana breed, and seems to lead to the conclusion that white egg chickens instead of brown egg chickens should have been used to develop desired plumage colors.

Most white egg breeds are of Mediterranean origin and have white earlobes. The latter trait is a show disqualification for Ameraucanas. Are we left with a "Catch 22" situation? Not really, but this does present an additional degree of breeding difficulty.

It is possible to breed white out of the earlobes in a strain of birds while maintaining the proper blue eggshell color. To do so simply requires raising more birds because culling for the improper trait(s) will necessarily be more severe. It can be and has been done.

Another approach would be to select (for crossbreeding) one of the few breeds that actually do have red earlobes and lay either white or very slightly tinted eggs. The Crevecoeur (black) and the Lamona (white) breeds are two examples and there are others.

Perhaps there are a few Araucana strains that lay good blue eggs as well.

There exists other means of improving egg color as well, not the least of which is selection over time. If certain individuals in a flock lay a bluer egg than others, those individuals and their male offspring should be the only ones used for breeding. If certain male birds throw female progeny that produce better-than-average colored eggs they should be bred back to their daughters, other factors being equal. Caution must be exercised to prevent too close inbreeding, as lower production and fertility would result.

A final possibility, and at this stage of the game perhaps the most satisfactory, would be to seek out another strain of the same Ameraucana variety that does in fact lay excellent blue eggs. If the green egg strain is superior to the blue egg strain in certain other respects, the two lines could be crossed. If enough offspring are raised and culling is properly done, the best attributes of both strains should be combined in one new superior strain within merely a few generations. If the same variety is not available, another variety could be used.

White, for example, could be improved by crossing to black, preferably a black male with a little silver in the hackle. This cross will take only two generations to get back to 100 percent white offspring.

Breeding for improvement is seldom quick and easy, but difficulty only makes eventual success all the sweeter. As Winston Churchill, the prime minister of England during World War II, once said, "A kite rises highest against the wind." Good Luck!

Upcoming Ameraucana Breeders Club Meets

June 14, 2008

Special Meet, requested by Patty Pickard
Buckeye Fancy Feathers, Canfield, OH
Contact:
Rhonda Simmons, rjos@comcast.net, (330)426-6870

August, 2008

Montana State Meet, requested by Koralyne Kibbee
Montana State Fair, Great Falls, MT
Contact:
Bert Thompson
Box 99
Sunriver, MT 59443

August 9, 2008

Iowa State Meet, requested by Al Nichols
Iowa State Fair, Des Moines, IA
Contact:
Al Nichols, coyotecornerqh1@aol.com

August 30, 2008

Special Meet, requested by Wayne Gritter
White River Show, Spencer, IN
Contact:
Larry Lawrence, (812)876-8651

September 10-12, 2008

Washington State Meet, requested by Connie Jean Ribbeck
Spokane Country Fair, Spokane, WA
Contact:
Tony Albritton, (509)465-9405

September 27-28, 2008

Wisconsin State Meet, placed by Jerry De Smidt
Wisconsin International Poultry Club Show, Portage, WI
Contact:
Elizabeth Breuer, birdbrainfam@aol.com, (608)877-9901
3402 Rutland-Dunn Rd.
Stoughton, WI 53589

October 11-12, 2008

North Central District Meet, placed by Jerry DeSmidt
Michigan Poultry Fanciers – Frankenmuth Fowl Fest,
Frankenmuth, MI
Contact:
John W. Blehm, John@FowlFest.org, (989)777-1234

October 11, 2008

South Central District Meet, placed by Paul Smith
Southern Missouri Poultry Club, Sedalia, MO
Contact:
Pat Johnson, (417)993-0099
Brad Buttram, bradliff122306@yahoo.com, (417)462-7792
400 Luthy Road
Niangua, MO 65713

October 18, 2008

Indiana State Meet, requested by Jerry DeSmidt
Central Indiana Poultry Show, Lebanon, IN
Contact:
Doug Akers, dakers@purdue.edu (765)482-7182
Ron Patterson, patter815@earthlink.net (765)676-6192

October 24-26, 2008

ABC National Meet, placed by the Jerry DeSmidt
Minnesota State Poultry Association Show, Hutchinson, MI
Contact:
Mary Ann Rademacher, ajmrademacher@embarqmail.com,
(952)442-4031
9185 County Road 10E
Waconia, MN 55387

October 25, 2008

South East District Meet, placed by Barbara
Campbell
Bluegrass Poultry Association, **Location is Pending**
Contact:
Laura Haggarty, Lhaggarty@blueone.net

November 8-9, 2008

Ohio State Meet, requested by Patty Pickard
Ohio Poultry Breeders Association, Columbus, OH
Contact:
Eric Markley, markley@ohionational.org,
(419)568-7402

November 27-28, 2008

Special Meet, placed by Jerry DeSmidt
Eastern Iowa Poultry Show, Iowa City, IA
Contact:
Phil Shank, pbshank@netins.net (319)646-2001

January 24-25, 2009

Western District Meet, placed by Lisa Cree
Pacific Poultry Breeders Association Winter,
Stockton CA
Contact:
Teresa Renwick, (530) 268-2488,
renwickranch@sbbmail.com
1333 Quarterhorse Drive
Grass Valley, CA 95949



**Welcome to our
New Members**

Tim Boozer, SC

Tina Dinkins, TN

James T. Hammond, NY

James Jackson, FL

Jennifer Kelly, OH

Steve Langer & Terry
Brooks, ORGary & Michelle Fuchs,
NJ

Finnegan Kenner, MO

Suzanne Osio, NY

Abdul-Wali Shabazz, FL

Jordan Smith, WI

Rachel Wylie, MI

Morgan Zandonella, NV

Features in the**June Issue:**

Blast from the Past

National Meet Information

2008 National Meet Minnesota State Poultry Association Show

The Minnesota State Poultry Association would like to invite you to attend our fall show for the National Ameraucana Show in 2008. The judge of the Ameraucana will be Don Karasek.

The show dates for 2008 are October 25th and October 26th with entries being brought in on Friday, October 24th. The show will be held at the fairgrounds in Hutchinson, Minnesota, which is about 50 miles west of the Twin Cities.

The following awards will be offered for the Ameraucana National Meet:

\$25.00 Best Large Fowl Display

\$25.00 Best Bantam Display

Rosettes for BV in each color in Large Fowl and Bantams.

Plaque for Champion and Reserve Large Fowl

Plaque for Champion and Reserve Bantam

Additional awards by Breeders.

Our club awards over \$2,000 in cash and plaques for the entire show.

Motels in Hutchinson:

1. Super 8 Motel - 1-320-587-9299 (Headquarters)
2. America-Inn - 1-320-587-5515
3. Best Western Victorian Inn - 1-320-587-6030
4. King Motel - 1-320-587-4737
5. Economy Inn - 1-320-587-2129

Ameraucana Breeders Club Board of Directors

President, John Blehm

4599 Lange Road, Birch Run, MI 48415 john@ameraucana.org (989)777-1234

Secretary/Treasurer, Michael Muenks

33878 Hwy 87, California, MO 65018-3911 michael@bantamhill.com (573)796-3999

Director-North Central, Jerry DeSmidt

N912 Hill Road, Pulaski, WI 54162 jwoodhaven@aol.com (920)833-9772

Director-Northeast, Rob Sando

2116 Street 121 W, New Madison, OH 45346 rsando_shrop@hotmail.com (937)996-0117

Director-South Central, Paul Smith

2257 CR 224, Gainesville, TX 76240 sw_psmith@swmail.com (940)668-0719

Director-Southeast, Barbara Campbell

392 Whitaker Hollow Road, Lake City, TN 37769 BlueEggAcres@comcast.net (865)494-0876

Director-West, Lisa Cree

PO Box 148, Seabeck, WA 98380 creefarm@peoplepc.com